

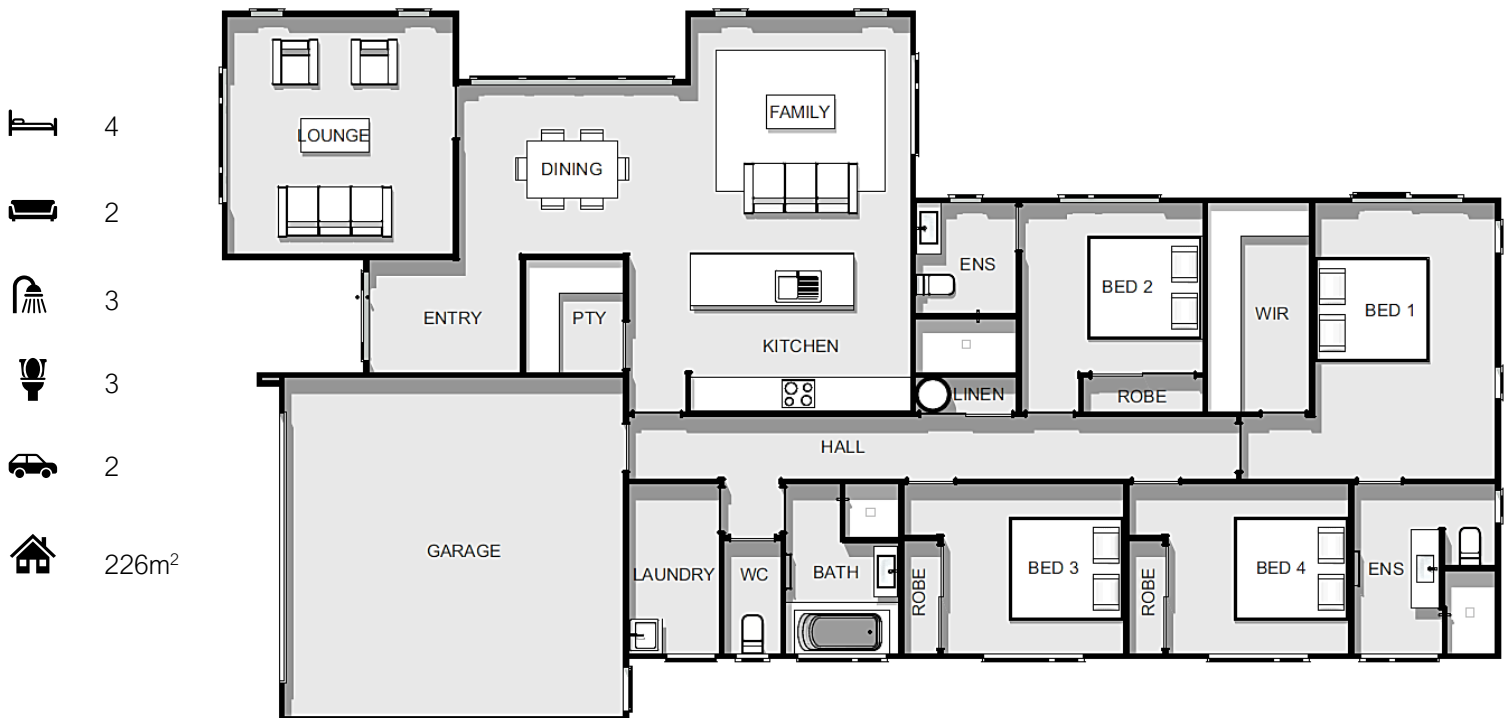
I'm in the  
Top 20

Exclusive Design

Kirkwood 226

### Why people like me?

- 226m<sup>2</sup> home including four bedrooms and three bathrooms
- Perfect for family/friends to stay with bed 2 featuring the second en-suite
- Two living areas with the lounge being separated
- Kitchen with walk in pantry



W 12.56m  
L 22.61m

**KEVLER** HOMES

kevlerrhomes.co.nz | Copyright to this plan is exclusive to Kevler Homes